

Scissor Charge

The Scissor Charge is a pre-made advanced breaching tool that incorporates ACE® Cutting Charge, SOB® Slip-On-Boosters, and Detonating Cord into a ready-made charge for defeating cables, chains, and other similar targets. The charge has both hook-and-loop strips and straps for easy attachment around the target.

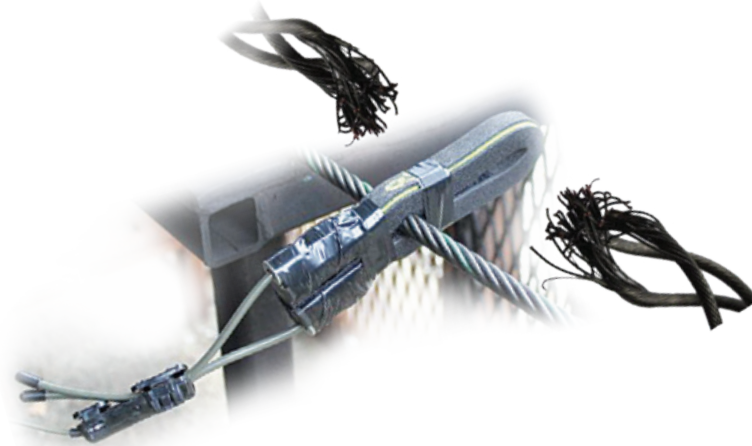
The charge assembly is vacuum-sealed in a barrier bag for maximum protection and storage life. The Pre-Made Charge is manufactured under controlled conditions, providing high consistency, quality, and reliability. All of the explosive components are designed, manufactured, and qualified for use by United States Military and International Forces.

APPLICATION:

- Designed to defeat cables and chains
- Cuts and severs target from both sides simultaneously
- No field assembly required – open and go

PROPERTIES:

- ACE® - 20" (510 mm) length
- Detonating Cord - 50 gr/ft (10 g/m) - two (2) 6" (150 mm) for attachment of standard military detonators
- SOB® Slip-On-Booster - for reliable initiation and detonation transfer
- Hook-and-loop strips - for attachment of the two ends
- Hook-and-loop strap - to secure to target
- Compliant with Montreal Protocol taggant (tracer) levels



EX2016070449
Charges, Demolition, UN0048
1.1D

SCISSOR CHARGE

PART NUMBER	EXPLOSIVE MATERIAL	CHARGE SIZE (NOMINAL)		CHAIN SEVERANCE (TYPICAL)		NET EXPLOSIVE WEIGHT (NOMINAL)*	
		grain/foot	gram/meter	in	mm	lb	gram
D12108-0300	RDX (charge) PETN (booster and cord)	300	63	0.38	9.5	0.101	45.9
D12108-0450	RDX (charge) PETN (booster and cord)	450	100	0.55	14	0.137	62.2
D12108-0600	RDX (charge) PETN (booster and cord)	600	125	0.78	20	0.173	78.4
D12108-0900	RDX (charge) PETN (booster and cord)	900	190	N/A	N/A	0.244	110.9
D12108-1200	RDX (charge) PETN (booster and cord)	1200	250	0.82	21	0.316	143.4

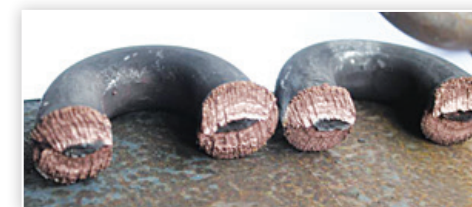
*Net Explosive Weight includes PRIMASHEET® and Detonating Cord.

OPERATIONAL STEPS:

1. The Scissor Charge is deployed by folding the ACE® charge over the target, securing the strips together and connecting and tightening the straps.
2. Once the charge is deployed, the detonator from an EBAD SKIN-PACK® or equivalent initiation device is attached to the Detonating Cord using an accepted method of attachment.



600 gr/ft Scissor Charge



0.78" Thick Steel Chain

ENSIGN-BICKFORD AEROSPACE & DEFENSE COMPANY
640 HOPMEADOW STREET, P.O. BOX 429, SIMSBURY, CT 06070, USA www.EBAD.com

SKIN-PACK®, PRIMASHEET®, DETASHEET®, ACE® and SOB® are registered trademarks of EBAD.

Attention: The information and recommendations described in this brochure cannot possibly cover every application of the products or variation of conditions under which the products are used. The recommendations herein are based on the manufacturer's experience, research and testing. They are believed to be accurate, but no warranties are made, express or implied. In addition, the specifications contained herein are all nominal which represent our current production. The products described may be subject to change. Please feel free to contact Ensign-Bickford Aerospace & Defense Company for verification. No Warranties or Liabilities: THE PRODUCTS DESCRIBED HEREIN are sold "AS IS" and without any warranty or guaranty, express, or implied, arising by law or otherwise including without limitation any warranty of merchantability or fitness for a particular purpose. Buyer and user agree further to release and discharge seller from any and all liabilities whatsoever arising out of the purchase or use of any product described herein whether or not such liability is occasioned by seller's negligence or based upon strict products liability or upon principles of indemnity or contribution. ©2021 Ensign-Bickford Aerospace & Defense Company, Simsbury, CT 06070, U.S.A.